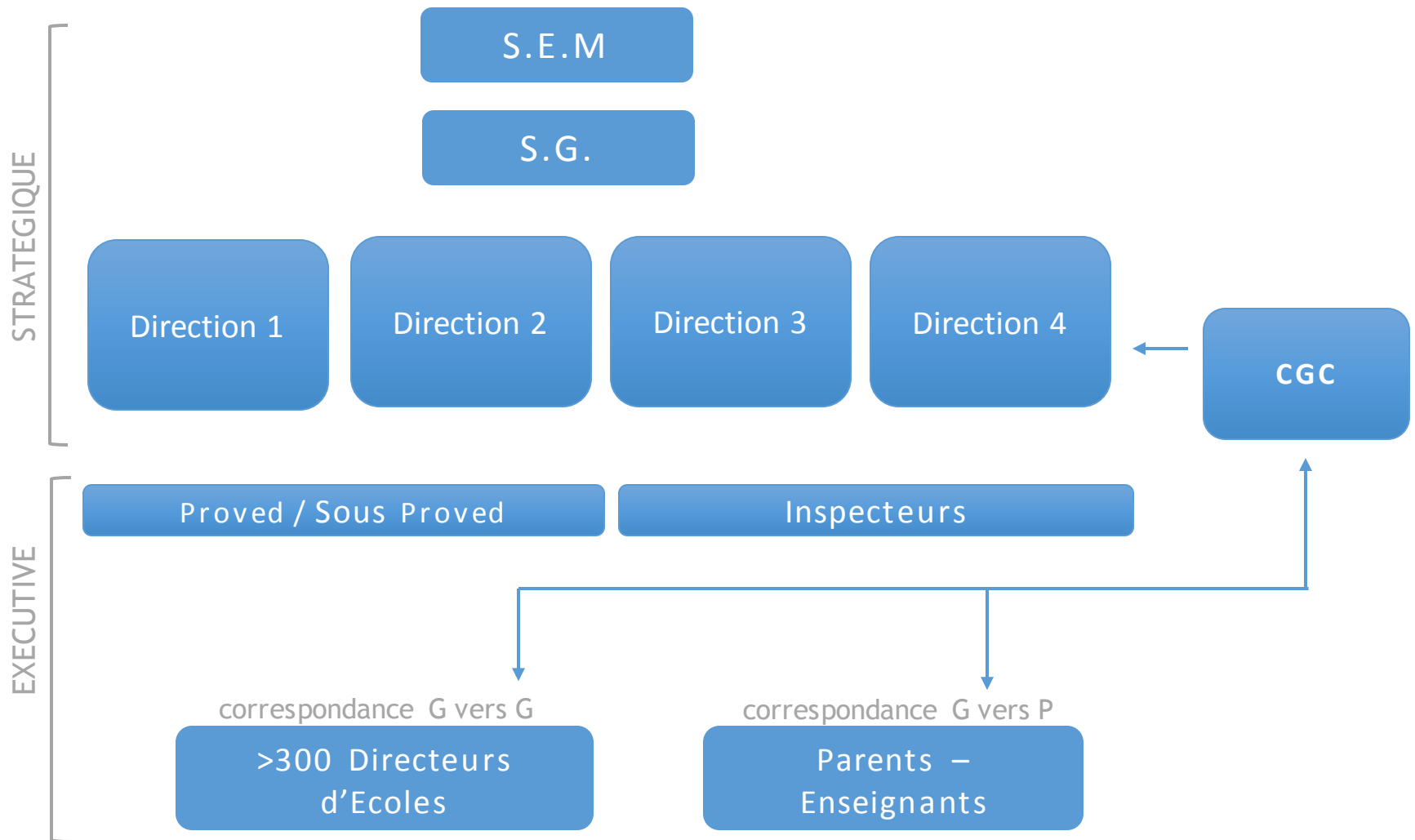
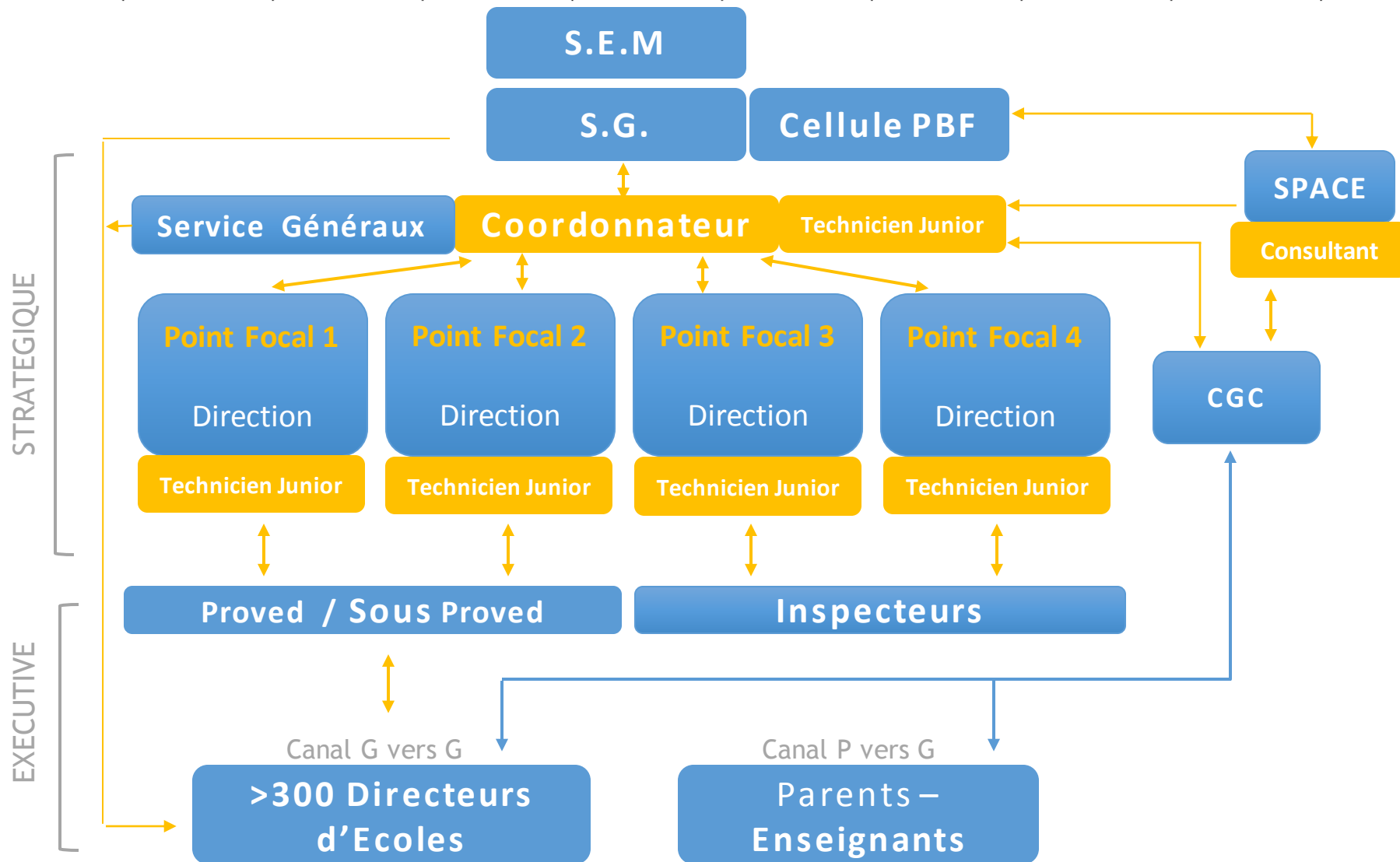


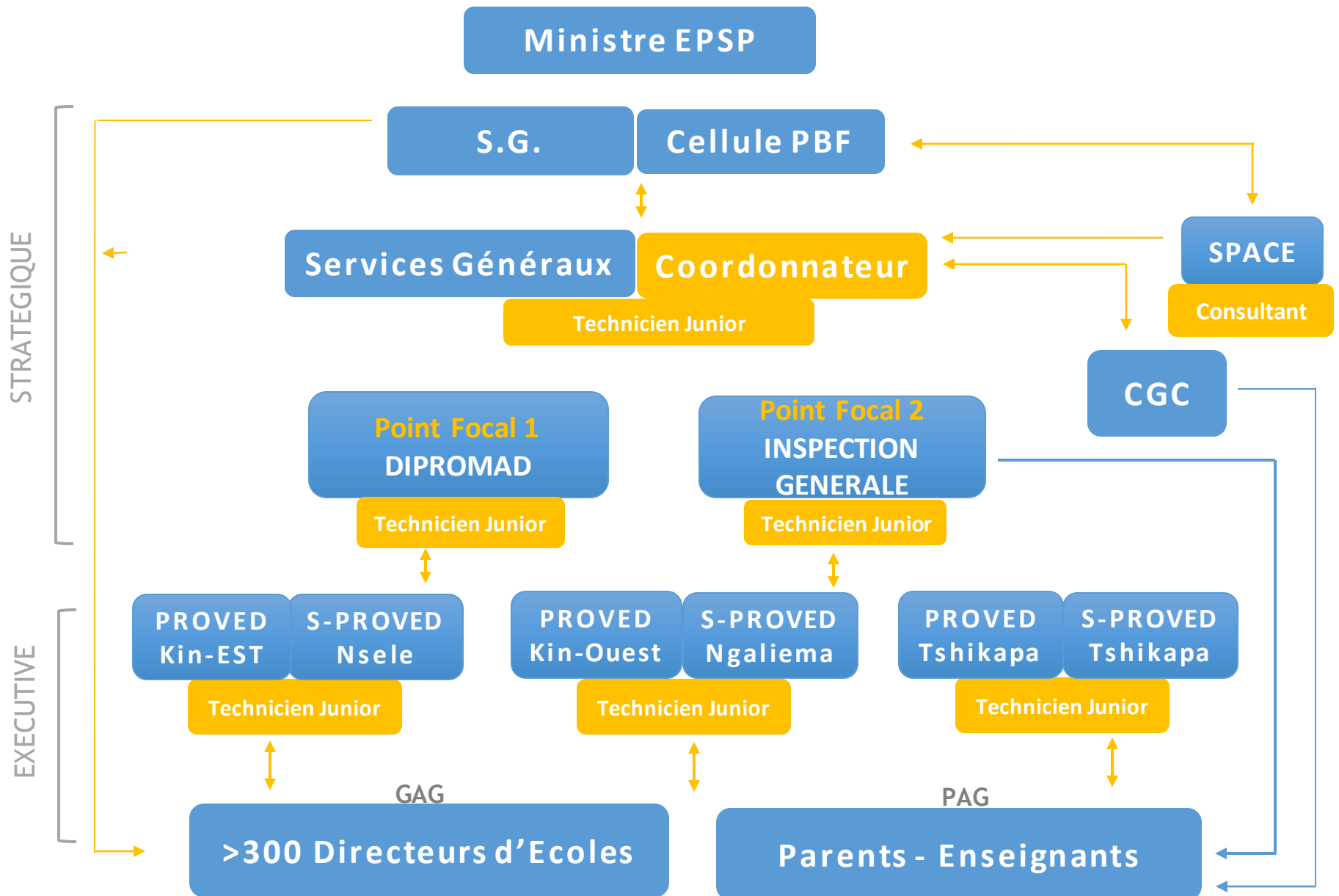
Organigramme Existant (Allo Ecole)

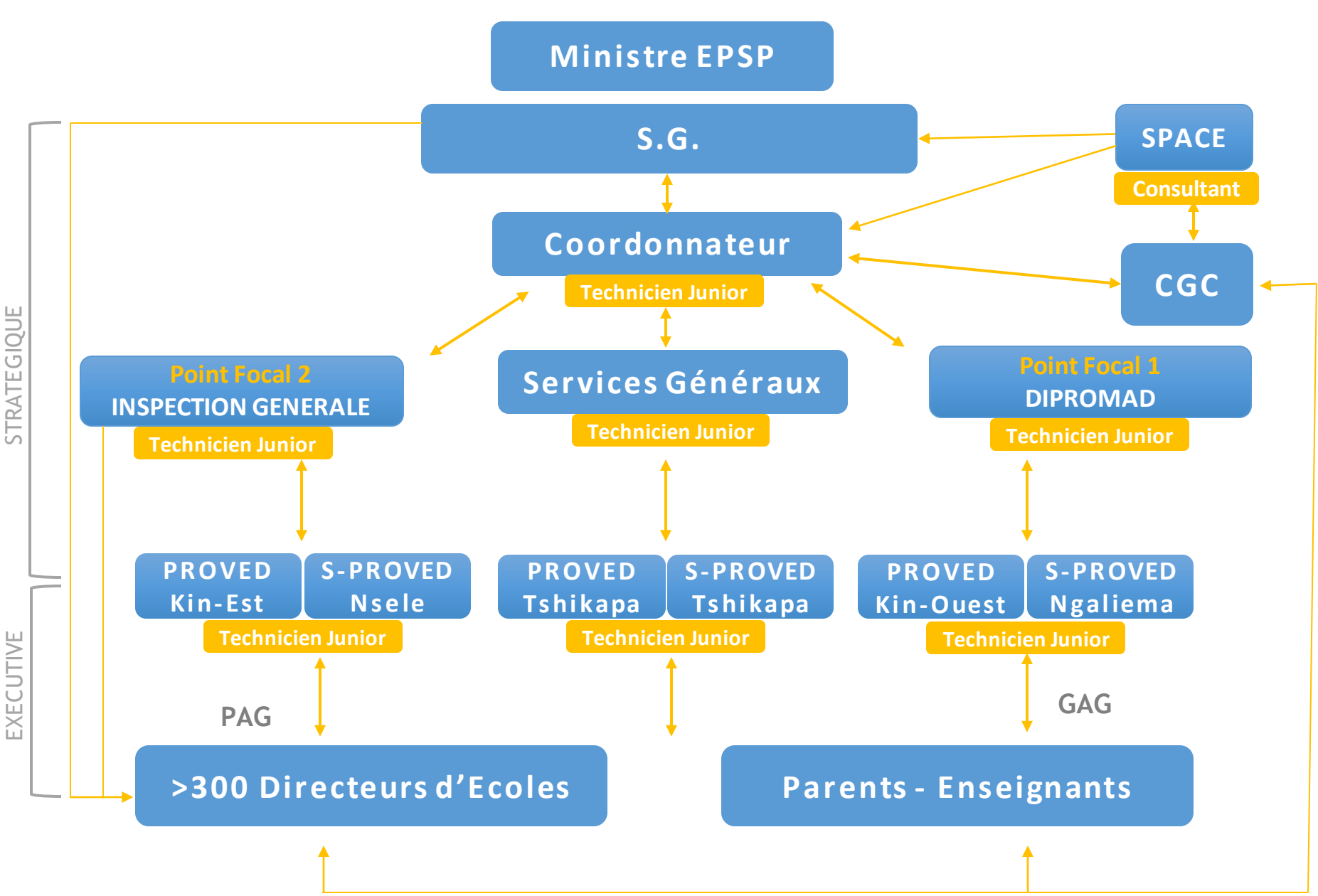


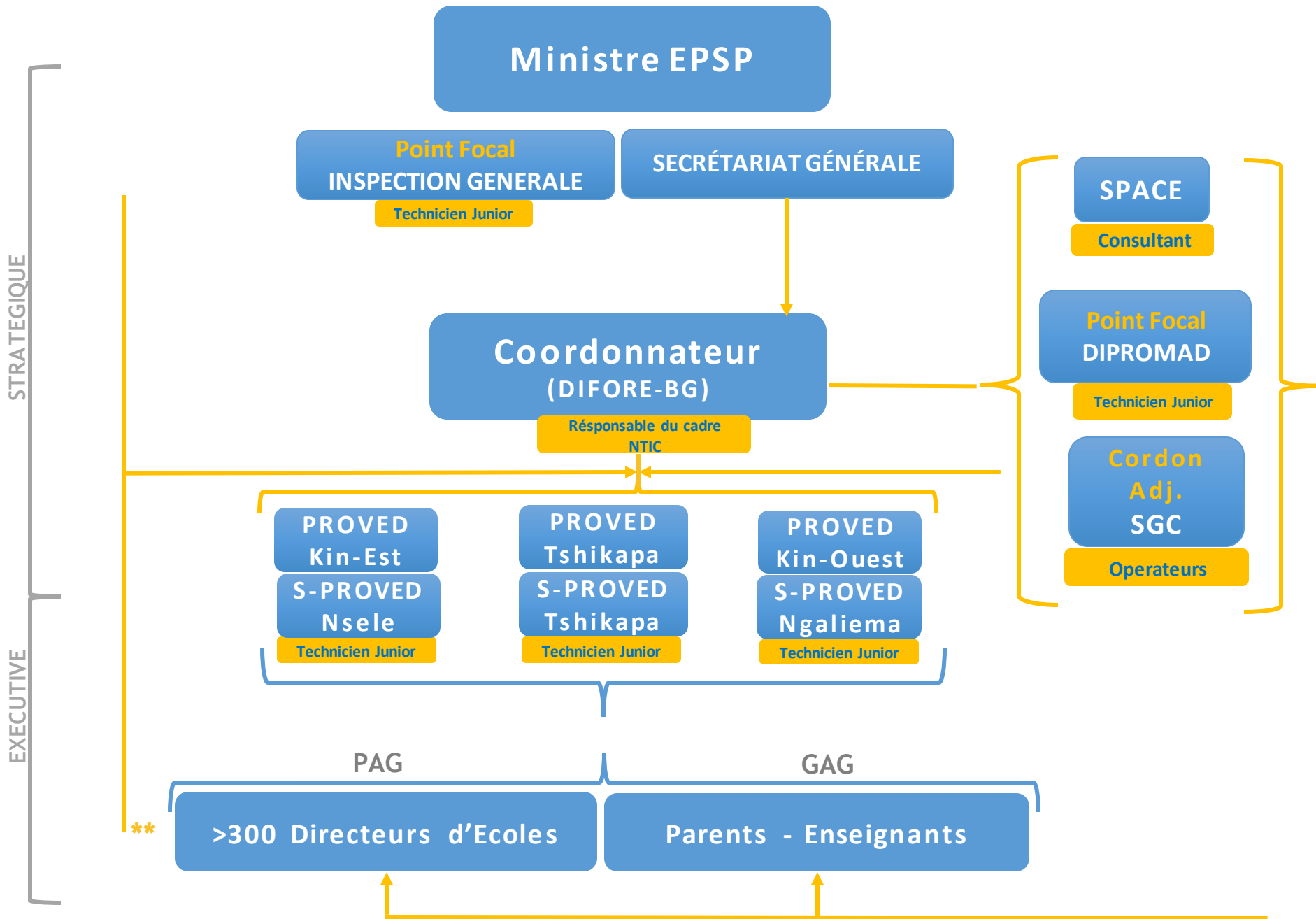
Premier Organigramme Proposé: Phase 2



Deuxième Organigramme Propose: Phase 2







** Inspool devrait travailler avec les écoles pour vérifier les actions prises par les Sous-PROVEDs et directions stratégiques concernées

Legend

- INS POOL reports to Inspection Générale Focal Point and monitors Sous-PROVEDs work at the school level (we need arrows here). **They do not need technical assistance as they will receive Allo Ecole reports from Inspection Generale**
- SOUS-PROVEDS could directly report to Service Généraux about Allo Ecole and send periodical reports to their PROVEDs who don't need to receive technical assistance from our project. We could simply add PROVEDs on top with arrows
- EFV: they only do training in specific areas (not really in Allo Ecole pilot areas) on action plans to improve girls education but in terms of taking any action on the ground they will not be useful for us. I'm not sure if they need technical assistance. They report directly to Secrétaire Générale to inform policy decisions on girls education.
- PBF: They only draft performance contracts and report to Secrétaire Générale. That's the extent of their work with us and i don't think they need technical assistance. We need to have more discussion with SPACE regarding this direction.
- **So we're talking about 7 Junior technicians, 1 IT Lead) and 1 SPACE consultant.**